

# Arbor Series™

Wood Wallcovering

**KOROSEAL**  
Interior Products Group



THE *Natural Appeal* OF WOOD.

THE *Convenience* OF WALLCOVERING.



The Arbor Series collection of wood wallcoverings showcases the warmth and beauty of real wood.

## IT'S MORE THAN A WALLCOVERING. IT'S ABOUT *making an impression.*



Arbor Series wood wallcoverings are made with the highest-grade wood veneer.

Experience the warmth and beauty of real wood at a fraction of the cost compared to millwork with Arbor Series's comprehensive line of wood wallcoverings. Arbor Series is a popular choice among designers, architects, and building owners looking for an attractive high-quality wood interior. Arbor Series Wood Wallcovering provides substantial cost savings compared to other wood options such as millwork. Delivering the beautiful look and feel of natural wood, Arbor Series offers everything you're looking for in a wood wallcovering and more!

### **A FOCUS ON THE ENVIRONMENT.**

Made with the highest grade of wood veneer, Arbor Series's efficient veneer slicing processes provides exceptional yields compared to other wood options, reducing the amount of hardwood required for an interior. Several species of trees are harvested from plantations which are carefully managed to ensure the forest's health.

### **A DEDICATION TO QUALITY.**

Arbor Series Wood Wallcovering sheets are pre-finished, AA-Architectural Grade veneer that install like contract wallcovering. Arbor Series is Class A fire-rated and manufactured with five components to provide stability and easy installation. For higher traffic areas, Arbor Series Ultra Finish wallcoverings provide increased durability and abrasion resistance. Multiple face matching options and custom stains are also available. This construction gives Arbor Series stability and allows for minimal expansion and contraction caused by seasonal humidity.

Add style to your environment with Arbor Series. To learn more, call us today at **800-828-4556**.

American Cherry, Flat Cut (Dark Custom Stain)





Afrormosia,  
Quarter Cut, RT



Anigre, Figured  
Quarter Cut



Anigre,  
Quarter Cut



Anigre,  
Quarter Cut, RT



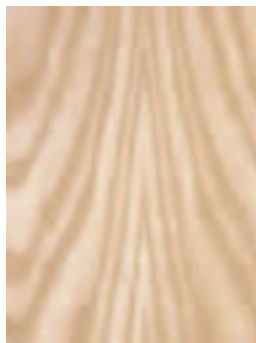
Ash, Japanese  
Flat Cut



Ash, Japanese  
Quarter Cut



Ash, Tamo  
Burl



Ash, White  
Flat Cut



Avodire, Figured  
Quarter Cut



Bamboo,  
Caramel, Narrow



Bamboo,  
Caramel, Wide



Bamboo,  
Natural, Narrow



Bamboo,  
Natural, Wide



Beech,  
Quarter Cut



Birch, Karelian  
Burl



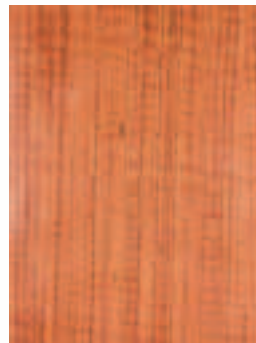
Birch, Red  
Flat Cut



Birch, White  
Flat Cut



Bubinga,  
Flat Cut



Bubinga,  
Quarter Cut, RT



Camphorwood, Burl

Teak, Quarter Cut



Ovangkol, Quarter Cut





Cedar, Western Red  
Quarter Cut



Cherry, American, Flat Cut  
(Dark Custom Stain)



Cherry, American  
Flat Cut



Cherry, American  
Quarter Cut



Ebony, Macassar  
Quarter Cut



Eucalyptus,  
Figured, Quarter Cut



Fir, Douglas  
Quarter Cut



Jatoba,  
Flat Cut



Lacewood, Bleached  
Quarter Cut



Lacewood,  
Quarter Cut



Laurel, Burl



Madrone, Burl



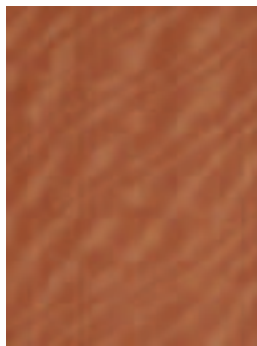
Mahogany, African  
Flat Cut



Mahogany, African  
Quarter Cut



Mahogany, African  
Quarter Cut, RT



Makore, Block Mottle  
Quarter Cut



Makore,  
Quarter Cut with Figure



Makore,  
Quarter Cut



Makore,  
Quarter Cut, RT



Maple, Birdseye "A"

Wood is a natural product, and accordingly, color, tone, and grain configuration may vary from pictures shown above.



Maple, Burl



Maple, Curly Rotary Cut



Maple, White Quarter Cut



Maple, Rotary Cut



Maple, White Flat Cut



Maple, White Quarter Cut, RT



Marblewood, Burl



Moabi, Quarter Cut



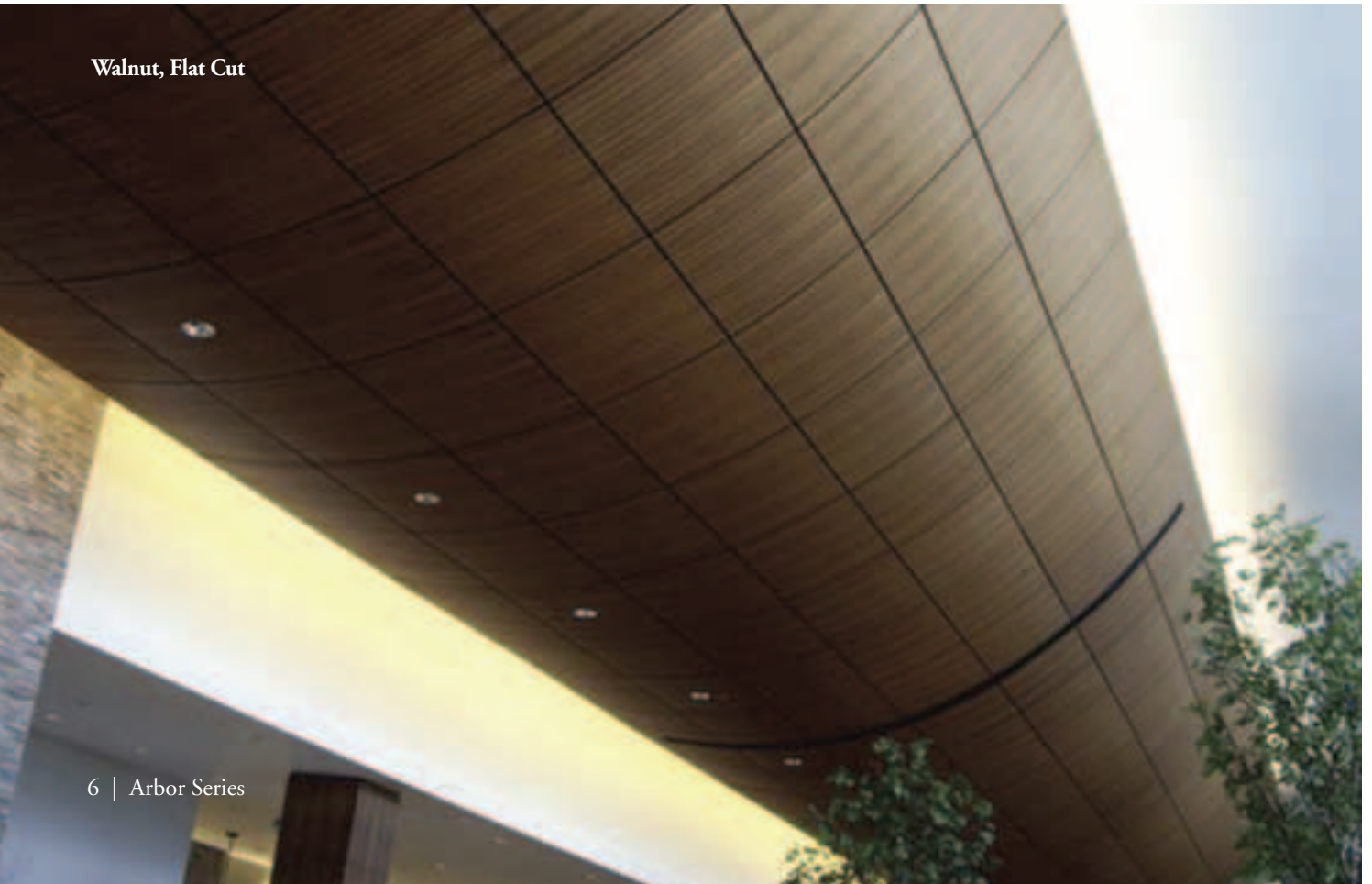
Movingui, Dyed Quarter Cut

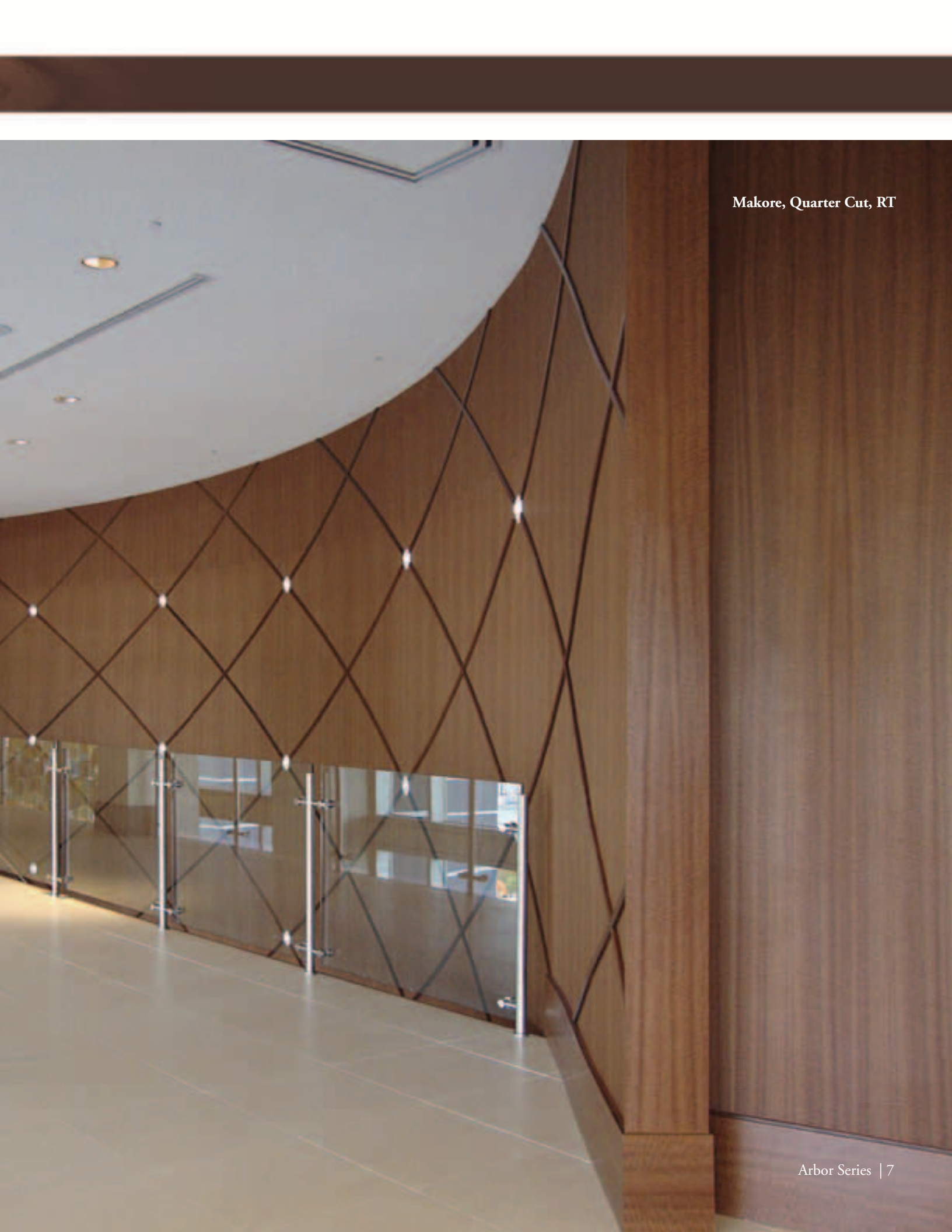


Movingui, Figured Quarter Cut

*Wood is a natural product, and accordingly, color, tone, and grain configuration may vary from pictures shown above.*

### Walnut, Flat Cut





Makore, Quarter Cut, RT

Makore, Quarter Cut, RT





Mutenye,  
Quarter Cut, RT



Oak, Red  
Flat Cut



Oak, Red  
Rift Cut



Oak, White  
Rift Cut



Oak, White  
Flat Cut



Paduak, Brazilian  
Flat Cut



Paldao, Figured  
Quarter Cut



Pearwood, Swiss  
Flat Cut



Rosewood, Andes  
Flat Cut



Rosewood, Banzel  
Flat Cut



Rosewood, East Indian  
Quarter Cut



Rosewood, East Indian  
Flat Cut



Sapele, Flat Cut



Sapele, Pommele  
Burl



Sapele, Ribbon Mahogany  
Quarter Cut



Sapele,  
Quarter Cut, RT



Sycamore, English  
Figured Quarter Cut



Teak, Flat Cut



Teak, Honey  
Flat Cut



Teak,  
Quarter Cut

Wood is a natural product, and accordingly, color, tone, and grain configuration may vary from pictures shown above.



Walnut,  
Quarter Cut



Walnut, American  
Flat Cut



Walnut, Burl



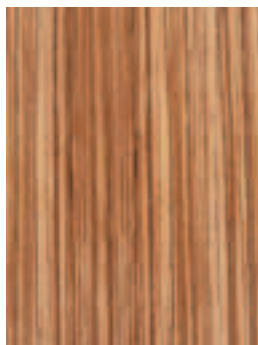
Walnut, Olive  
Flat Cut



Walnut, Satin  
Quarter Cut with Sap

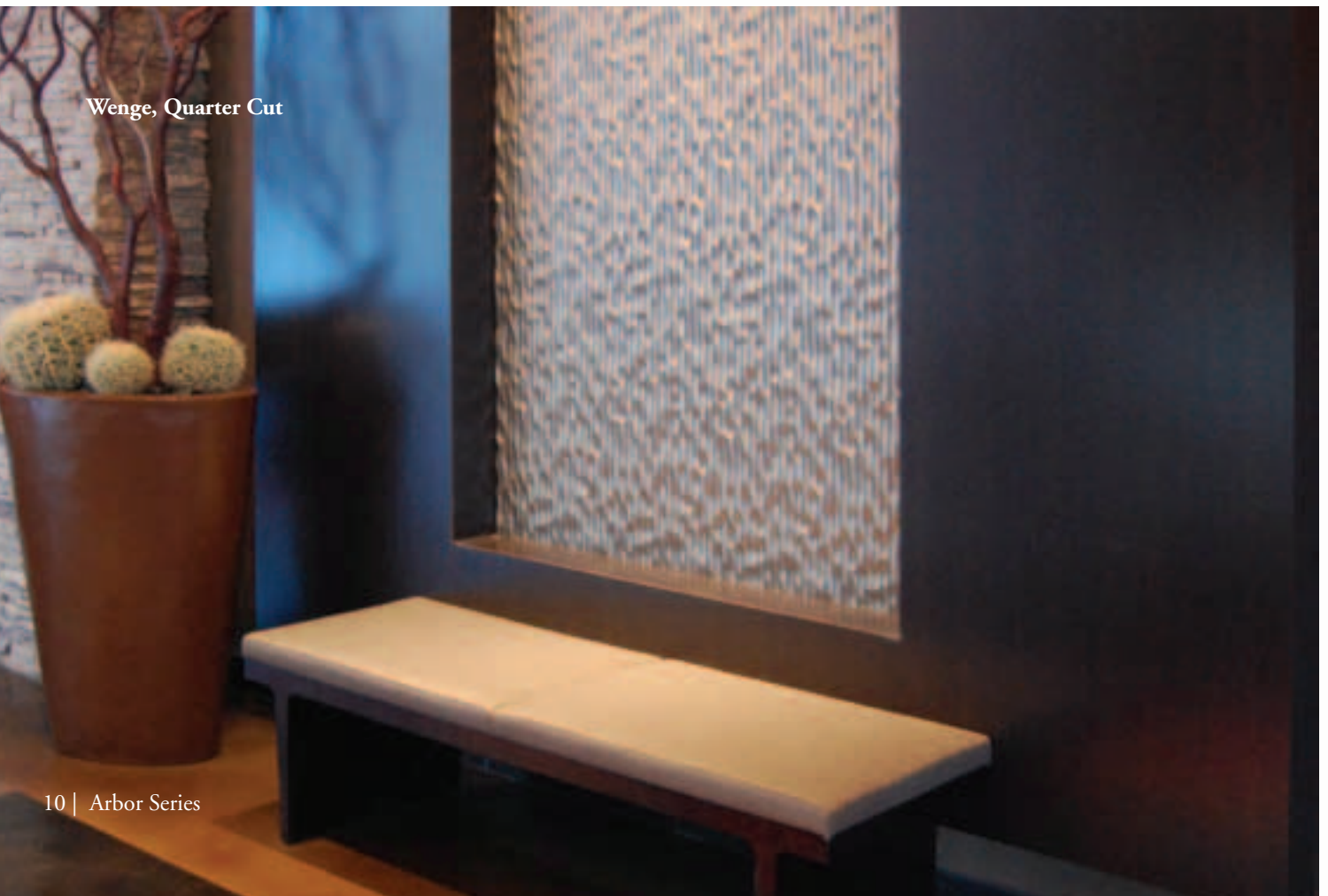


Wenge,  
Quarter Cut



Zebrawood,  
Quarter Cut

*Wood is a natural product, and accordingly, color, tone, and grain configuration may vary from pictures shown above.*



Wenge, Quarter Cut

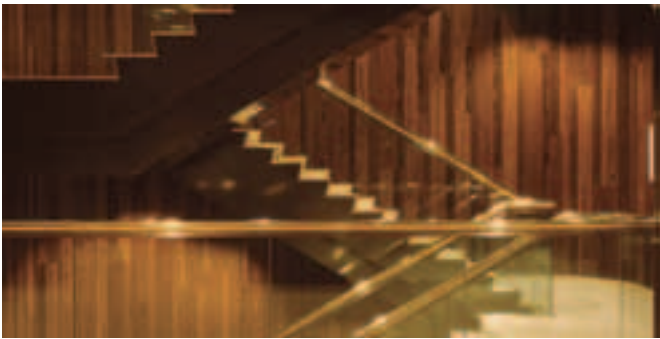


Ovangkol, Quarter Cut



Natural appeal combined with the convenience of a wallcovering application make Arbor Series wood wallcoverings the perfect design solution.

THE *Natural Appeal* OF WOOD.  
THE *Convenience* OF WALLCOVERING.



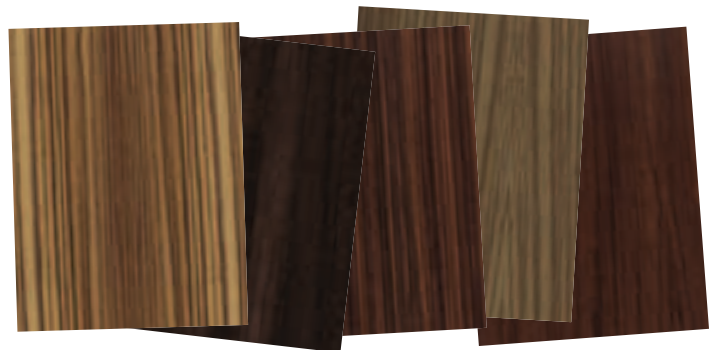
Arbor Series wood wallcoverings make a bold, beautiful statement about your facility's interior.

Arbor Series Wood Wallcoverings offer abundant natural appeal and the convenience of wallcovering. Efficient veneer slicing processes provide exceptional yields compared to other wood options, reducing the amount of hardwood required for an interior. With Arbor Series, you'll benefit from:

- A 300% greater yield from a log compared to millwork
- Pre-finished veneers; no staining required at the jobsite
- Class A Fire-Rated products
- Simple installation with low VOC adhesive

**CUSTOM STAIN CAPABILITIES**

Arbor Series products can be custom-stained to achieve variation in the appearance of the wood species. This process offers a new level of design flexibility to match existing tonal variations.



Pictured are five unique custom stain options on Zebrawood, Quarter Cut wood wallcovering.



## *Applications*

- Assisted Living Facilities
- Banks
- Conference Rooms
- Corporate Lobbies
- Hospitality Interiors
- Law Firms
- Offices
- Restaurants

## CLASS A FIRE-RATED

ASTM:	E84
Flamespread:	10
Smoke Developed:	25

NFPA Corner Burn Test: Meets requirements for flamespread, smoke developed and flashover.

Bamboo Wood Wallcoverings are Class B Fire-Rated; Ultra Products are not Fire-Rated.

## FINISH

Standard:	2 coat urethane finish with 30% sheen
Ultra 30:	3 coat urethane finish with 30% sheen (used in high traffic areas)
Ultra 70:	3 coat urethane finish with 70% sheen (used in high traffic areas)

## SIZE

3' x 9' sheets; custom sizes available. Inquire with your local sales representative (RT products size is 3' x 8')

## CUSTOM CAPABILITIES:

- Custom Stains
- Custom Sizes
- Cross Graining

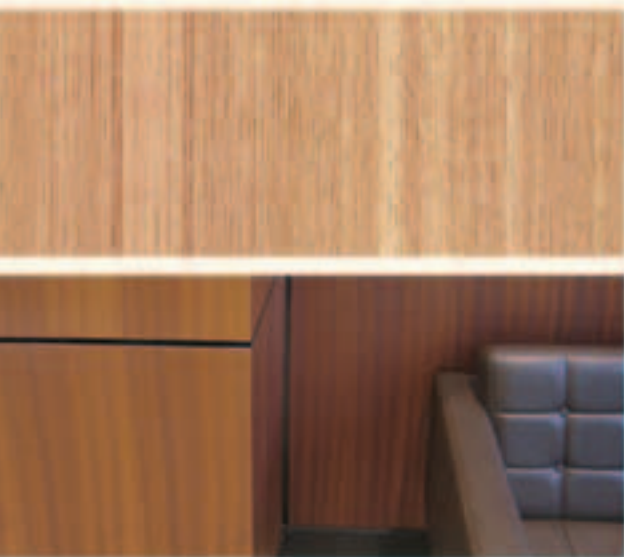
## MATCHING:

- Book Matching
- End Matching
- Swing Matching
- Plank Matching

## ARBOR SERIES BENEFITS

- AA-Architectural Grade Veneer
- Installs like contract wallcovering
- Arbor Series Wood Wallcovering sheets are pre-finished
- Because of the greater production yield achieved with wood veneers, fewer hardwood resources are required compared to solid millwork
- Improved stability provides minimal expansion and contraction caused by seasonal humidity
- Inquire with your local distributor

Arbor Series Wood Wallcoverings are subject to availability.



*Arbor Series*<sup>™</sup>  
Wood Wallcovering

**metro**  
wallcoverings

**KORSEAL Interior Products Group**  
800-828-4556 • Fax: (866) 346-9096 • [arborseries.com](http://arborseries.com)  
3875 Embassy Parkway • Fairlawn, OH 44333-8342

800-440-0911 • [metrowallcoverings.com](http://metrowallcoverings.com)  
2600B Steeles Avenue West • Concord, Ontario • Canada • L4K 3CB

Arbor Series<sup>™</sup> is a trademark of RJF International Corporation.

ASBROC709